



PRESENTED BY STOUGHTON OASIS  
IN COLLABORATION WITH:  
STOUGHTON PUBLIC SCHOOLS  
STOUGHTON POLICE



# SAFETY RULES

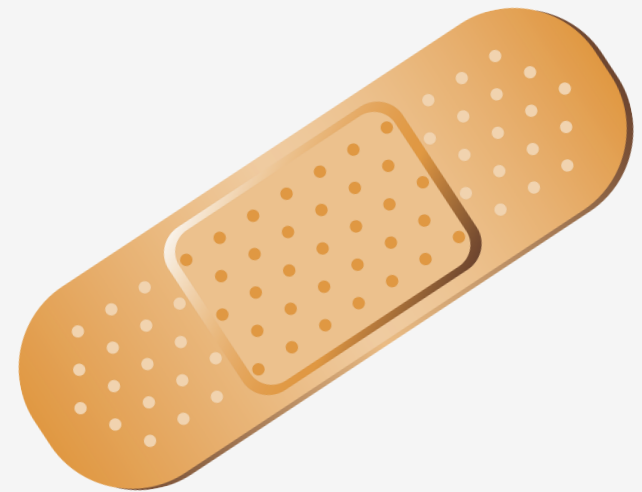
1. Only take medicine from a trusted adult
2. Never share your medicine
3. Keep medicine in its original container
4. Always store medicine in a safe place

# PARENT/GUARDIAN



# NURSE

Picture of YOUR school nurse



# PARAMEDIC / EMT



# PHARMACIST

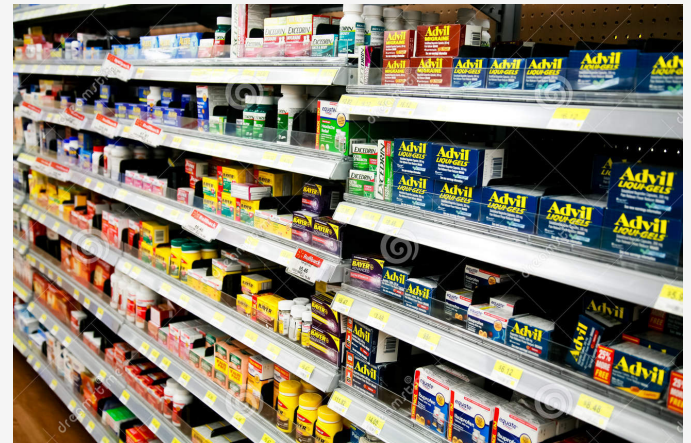


# TYPES OF MEDICINE

Prescription



Non-prescription  
(over the counter)





# MEDICATION LABEL

1. Your name
2. Name of the medicine
3. How to take the medicine



Best Pharmacy

John Doe Jr.

Amoxicillin 400mg/5mL suspension

Give one teaspoon by mouth two times a day,  
for 10 days.

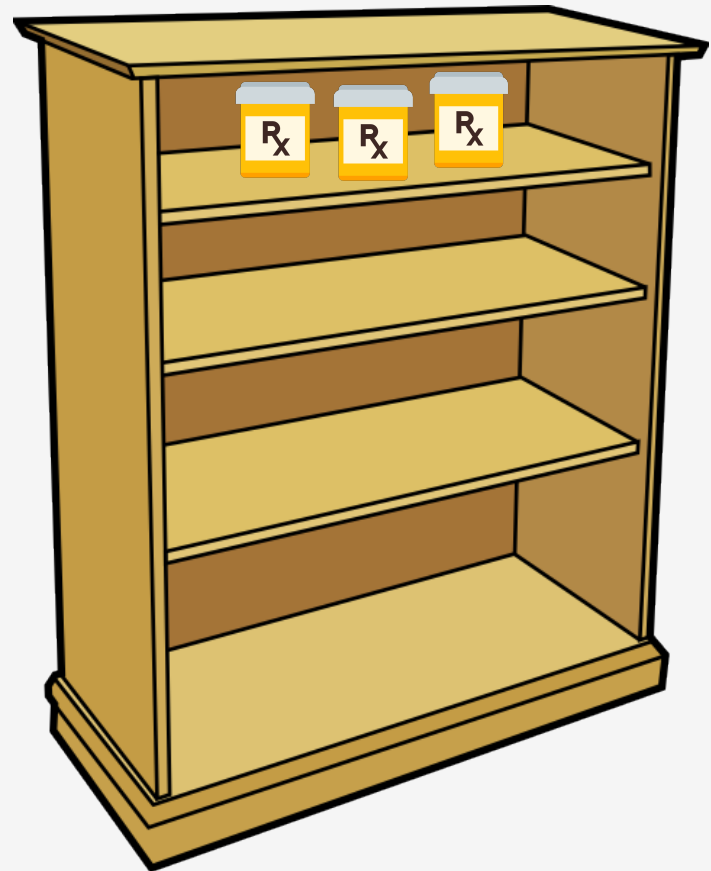


NEVER SHARE  
MEDICINE!



# STORE IN A SAFE PLACE

- Locked
- Secure





**GOOD CHOICE  
OR  
BAD CHOICE?**

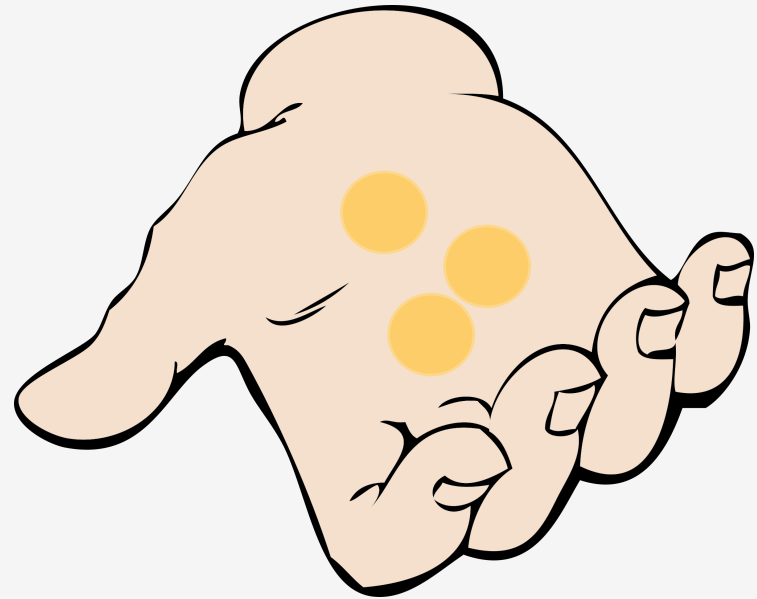
# HOW TO PLAY

- I will read a scenario
- Hold up the **GREEN** smiley face if the person makes a **good choice**
- Hold up the **RED** frowny face if the person makes a **bad choice**



# GOOD CHOICE OR BAD CHOICE?

Cindy takes MORE medicine than instructed.



**BAD CHOICE**



# GOOD CHOICE OR BAD CHOICE?

Julie discovers an object that may be medicine or candy.

She decides to immediately tell an adult.



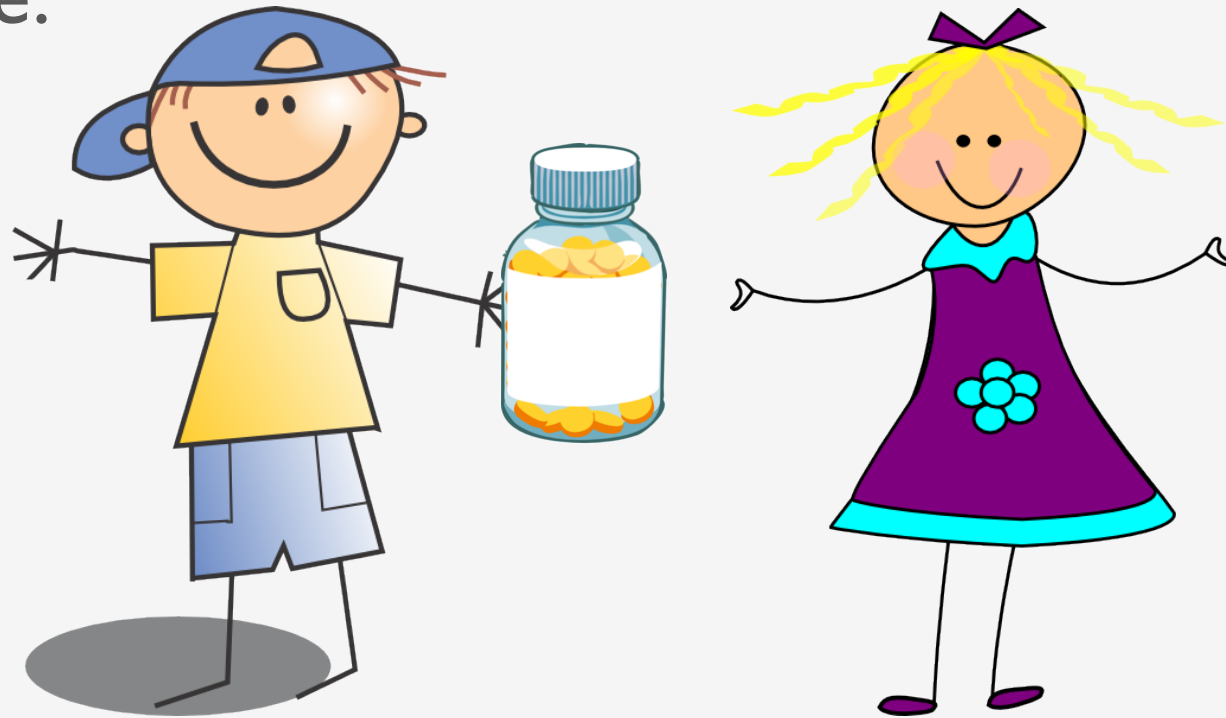


GOOD CHOICE



# GOOD CHOICE OR BAD CHOICE?

Jack decides to share his medicine with Susie.



**BAD CHOICE**



# GOOD CHOICE OR BAD CHOICE?

Julie is six years old and feels sick. She decides to take her medicine all by herself.

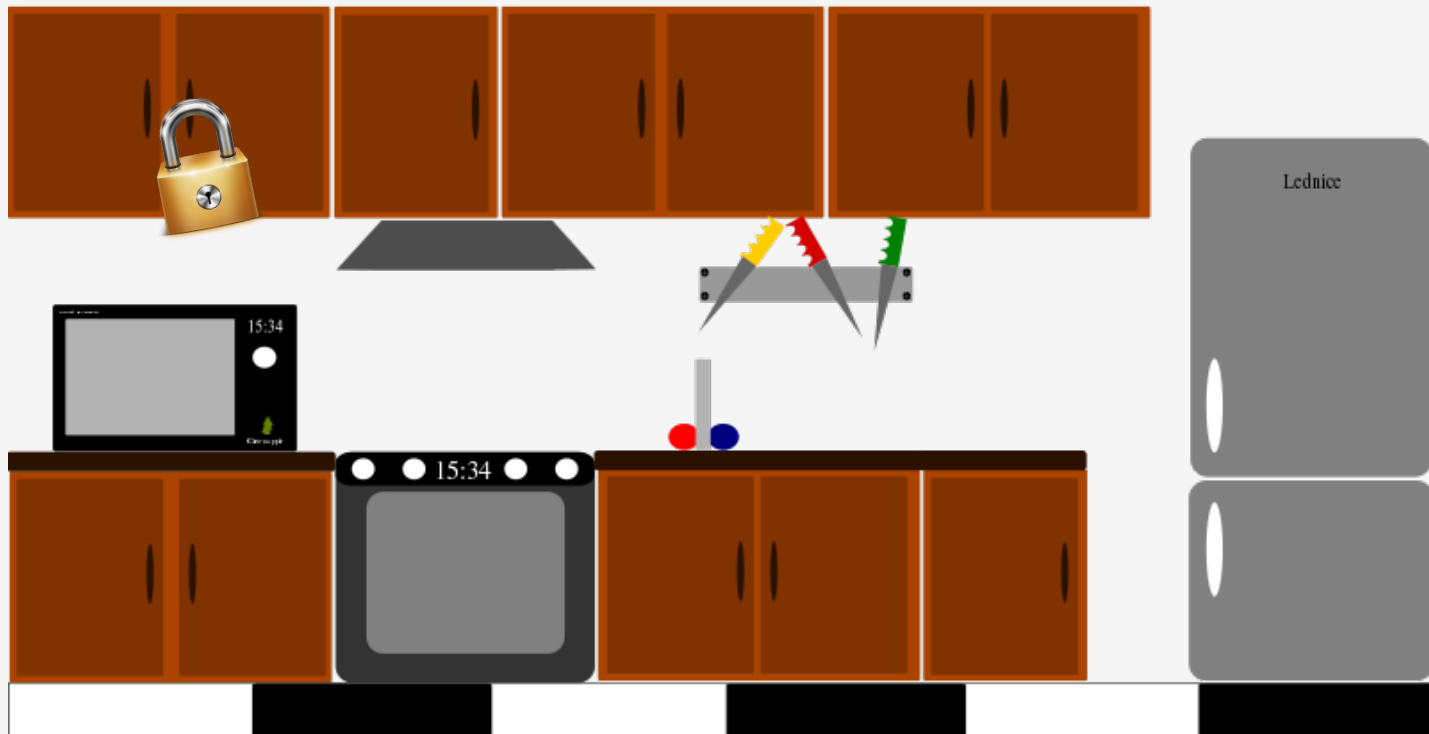


**BAD CHOICE**



# GOOD CHOICE OR BAD CHOICE?

Kevin tells his parents that medicine should be stored in a secure cabinet in your home.



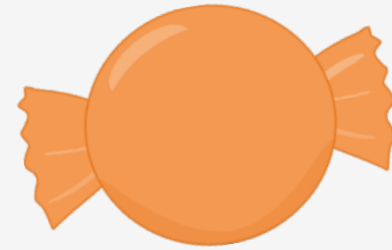
GOOD CHOICE





# GOOD CHOICE OR BAD CHOICE?

Jonathan isn't sure if this is medicine or candy. He decides to eat it anyways.



**BAD CHOICE**



# GOOD CHOICE OR BAD CHOICE?

Your friend Emily is sick.

You tell her that you will NOT share your medicine with her.

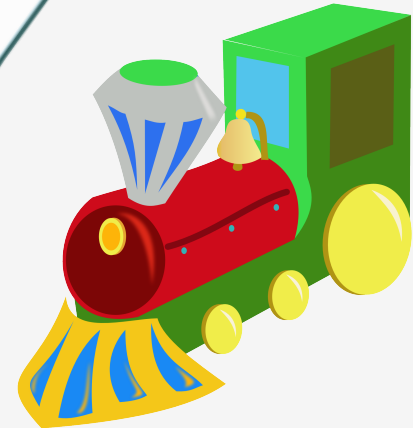
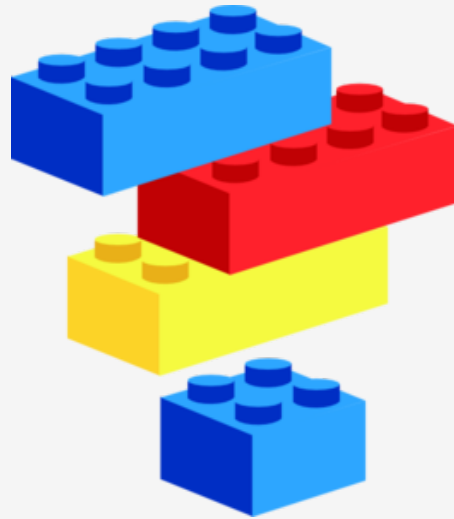


GOOD CHOICE



# GOOD CHOICE OR BAD CHOICE?

David stores his medicine with his toys.



**BAD CHOICE**



# GOOD CHOICE OR BAD CHOICE?

Kathy feels sick.

She decides to ask a trusted adult for help instead of taking medicine by herself.





GOOD CHOICE



# SAFETY RULES

1. Only take medicine from a trusted \_\_\_\_\_
2. \_\_\_\_\_ share your medicine
3. Keep medicine in its \_\_\_\_\_
4. Always store medicine in a \_\_\_\_\_ place

# SAFETY RULES

1. Only take medicine from a trusted adult
2. Never share your medicine
3. Keep medicine in its original container
4. Always store medicine in a safe place

# SPECIAL THANKS:

- Stoughton OASIS
- Stoughton Public School Nurses
- Stoughton Police Department
- Pharmacist Brown
- All the 2<sup>nd</sup> Graders & Their Teachers!

